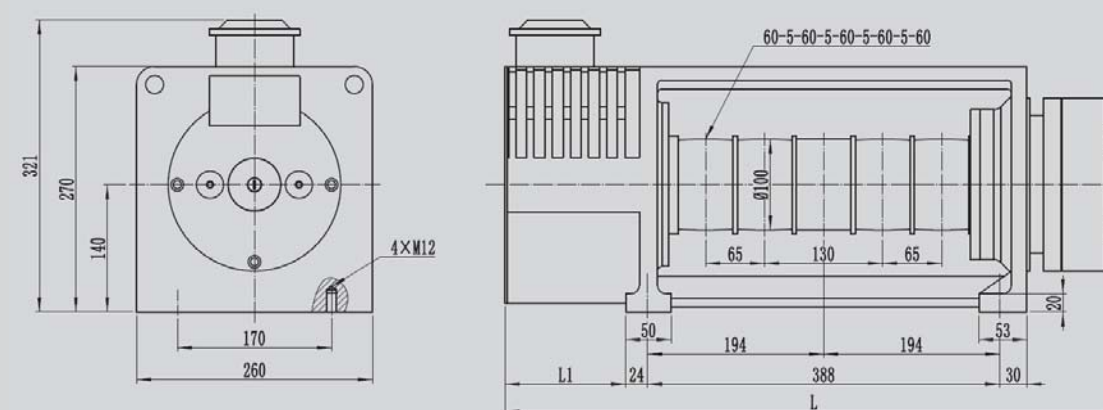


MGD100



安装尺寸图
DIMENSIONS

Permanent Magnet Synchronous Gearless Traction Machine – Belt Type

永磁同步无齿轮钢带曳引机

| | | |
|-------|------------------|-------------|
| 电源电压 | Voltage | 220V / 380V |
| 悬挂比 | Roping | 2:1 |
| 绕绳方式 | Wrap | 单绕(Single) |
| 额定载重 | Elv. Load | 320-630kg |
| 电梯速度 | Elv. Speed | 0.4-1.0m/s |
| 曳引轮节径 | Sheave Diam | 100mm |
| 工作制 | Duty | S5-40%ED |
| 起动次数 | Starts Per Hour | 180st/h |
| 最大轴静载 | Max. Static Load | 2500kg |
| 自重 | Weight | 140kg |
| 制动器 | Brake | DC110V 1.8A |
| 防护等级 | IP Code | IP41 |
| 绝缘等级 | Ins. Class | F |

规格表 / SPEC. SHEET

| 型号 | 规格 | 电梯载重 | 额定梯速 | 曳引轮直径 | 曳引轮绳槽 | 电源电压 | 额定电流 | 额定功率 | 额定转速 | 额定频率 | 额定转矩 | 电机极数 | L | L1 |
|--------|----------|----------|-----------|------------|---------------|---------|---------|-------|-------|------|--------|-------|-------|-----|
| Type | Spec | Elv Load | Elv Speed | Sheave Dia | Sheave Groove | Voltage | Current | Power | Speed | Freq | Torque | Poles | mm | mm |
| | | kg | m/s | mm | | V | A | kW | r/min | Hz | N.m | | | |
| MGD100 | 320-0.4 | 320 | 0.4 | 100 | 2×60 | 220/380 | 4 | 1.0 | 153 | 20.4 | 60 | 16 | 680.5 | 133 |
| MGD100 | 320-0.5 | 320 | 0.5 | 100 | 2×60 | 220 | 7 | 1.2 | 191 | 25.5 | 60 | 16 | 680.5 | 133 |
| | | | | | | 380 | 4 | | | | | | | |
| MGD100 | 320-0.63 | 320 | 0.63 | 100 | 2×60 | 220 | 7 | 1.5 | 241 | 32.1 | 60 | 16 | 680.5 | 133 |
| | | | | | | 380 | 4 | | | | | | | |
| MGD100 | 320-1.0 | 320 | 1.0 | 100 | 2×60 | 220 | 9 | 2.4 | 382 | 50.9 | 60 | 16 | 680.5 | 133 |
| | | | | | | 380 | 6 | | | | | | | |
| MGD100 | 400-0.4 | 400 | 0.4 | 100 | 2×60 | 220/380 | 5 | 1.2 | 153 | 20.4 | 75 | 16 | 680.5 | 133 |
| MGD100 | 400-0.5 | 400 | 0.5 | 100 | 2x60 | 220 | 8 | 1.5 | 191 | 25.5 | 75 | 16 | 680.5 | 133 |
| | | | | | | 380 | 5 | | | | | | | |
| MGD100 | 400-0.63 | 400 | 0.63 | 100 | 2x60 | 220 | 8 | 1.9 | 241 | 32.1 | 75 | 16 | 680.5 | 133 |
| | | | | | | 380 | 5 | | | | | | | |
| MGD100 | 400-1.0 | 400 | 1.0 | 100 | 2x60 | 220 | 12 | 3.0 | 382 | 50.9 | 75 | 16 | 680.5 | 133 |
| | | | | | | 380 | 8 | | | | | | | |
| MGD100 | 2:1 | 450 | 0.5 | 100 | 2x60 | 220 | 8 | 1.6 | 191 | 25.5 | 80 | 16 | 725.5 | 178 |
| | | | | | | 380 | 5 | | | | | | | |
| MGD100 | 2:1 | 450 | 0.63 | 100 | 2x60 | 220 | 8 | 2.0 | 241 | 32.1 | 80 | 16 | 725.5 | 178 |
| | | | | | | 380 | 5 | | | | | | | |
| MGD100 | 2:1 | 450 | 1.0 | 100 | 2x60 | 220 | 12 | 3.2 | 382 | 50.9 | 80 | 16 | 725.5 | 178 |
| | | | | | | 380 | 8 | | | | | | | |
| MGD100 | 2:1 | 630 | 0.5 | 100 | 3x60 | 220 | 11 | 2.2 | 191 | 25.5 | 110 | 16 | 725.5 | 178 |
| | | | | | | 380 | 7 | | | | | | | |
| MGD100 | 2:1 | 630 | 0.63 | 100 | 3x60 | 220 | 11 | 2.8 | 241 | 32.1 | 110 | 16 | 725.5 | 178 |
| | | | | | | 380 | 7 | | | | | | | |
| MGD100 | 2:1 | 630 | 1.0 | 100 | 3x60 | 220 | 16 | 4.4 | 382 | 50.9 | 110 | 16 | 725.5 | 178 |
| | | | | | | 380 | 11 | | | | | | | |

注 Remark:

1、本机用于无机房。 The machine is used for machine roomless.